





## Introduction

### Key Data

A same-level schools offers the most reasonable context to understand student-level influences to attainment and school performance.

This report provides data on Foster, & Homeless Youth, students receiving Special Education services, Socio-Economically Disadvantaged students, English Language Learners (ELL), and ELL levels for all District and Charter Elementary Schools. Suspension rates are also included.

Schools included are all 36 WCCUSD Elementary Schools, and three charter Elementary Schools.

All data were collected from DataQuest, California Department of Education.

~~15206~~

-17

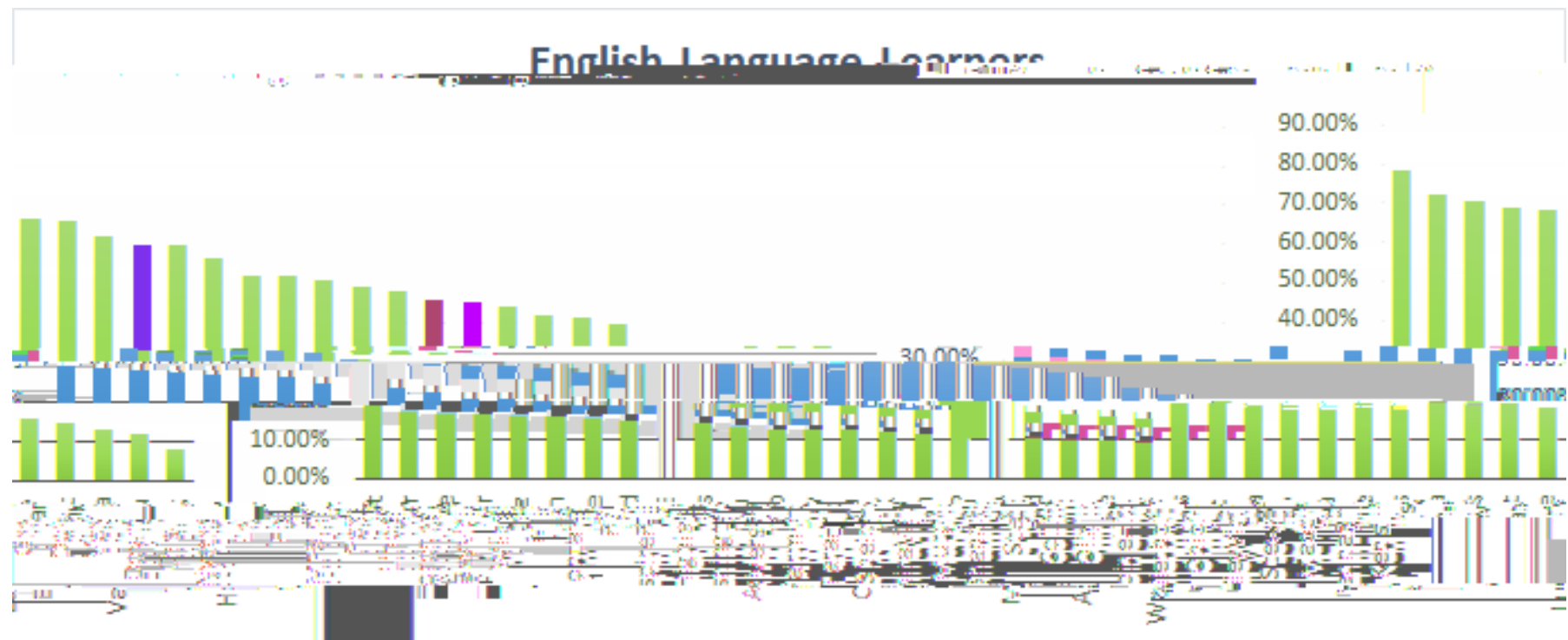






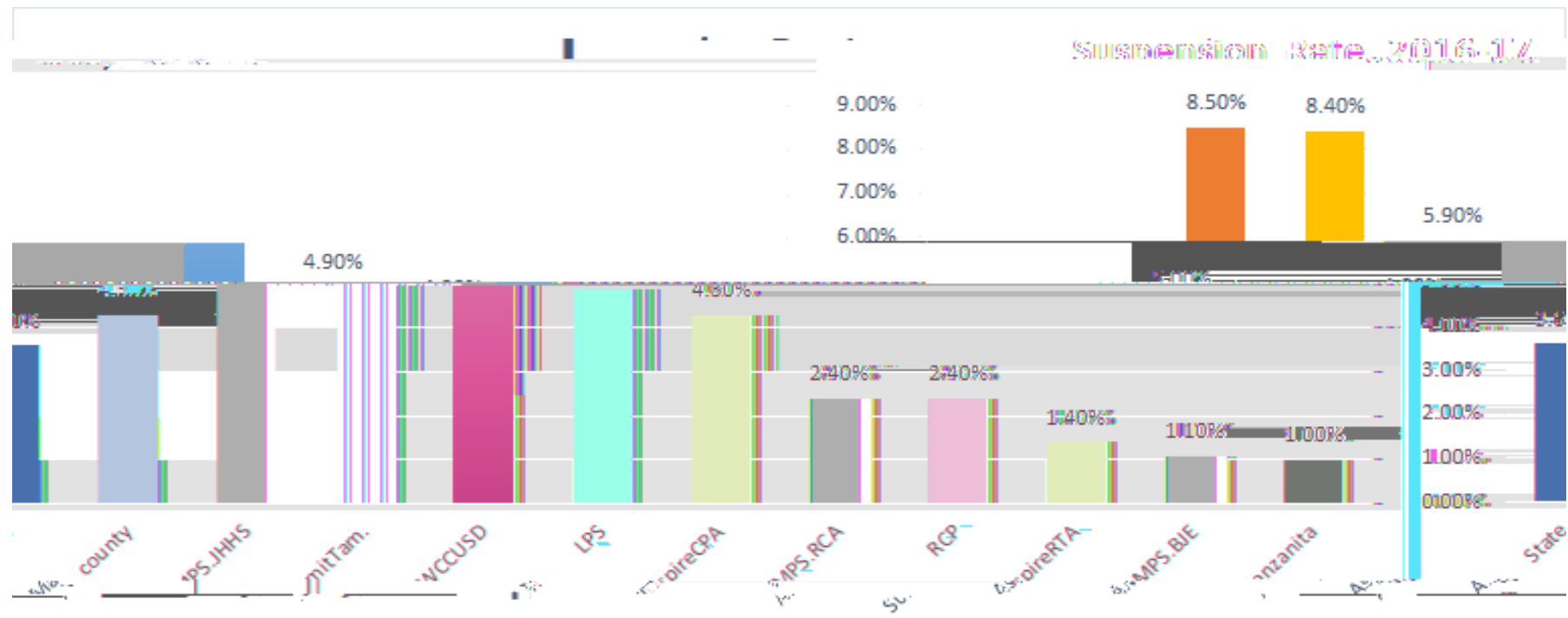


# 英語









~~2016~~

17



## FLA SPAG 2016-17

